

11/17/79
am please

Approved by
7/19/79
P 29892
A 26475
April 16

PERMIT

SEWAGE DISPOSAL SYSTEM

MARYLAND STATE DEPARTMENT OF HEALTH

HOWARD COUNTY

05-387035

ELLICOTT CITY

DISTRICT 5th

DATE 6/6/79

INDEXED

William Hopkins

IS PERMITTED TO INSTALL ALTER

ADDRESS _____ PHONE _____

SUBDIVISION _____ ROAD 8370 Old Columbia Pike LOT X New lot 6

PROPERTY OWNER George D. Weisman PRESENT OWNER 7/19/79

ADDRESS 1 Coronet Drive, N. Linthicum, Md.

SPECIFICATIONS 3 bedrooms

SEPTIC TANK CAPACITY 1000 GALLONS

DRAIN FIELD _____ DEPTH _____ FEET. BOTTOM AREA _____ SQ. FT.

DEEP TRENCH _____ DEPTH _____ FEET. BOTTOM AREA _____ SQ. FT.

SEEPAGE PITS ABSORBENT SIDE-WALL AREA 120 SQ. FT. per bedroom in system.

INLET PIPE 3 FT. BELOW ORIGINAL GRADE. MAXIMUM DEPTH 12 FT. BELOW ORIGINAL GRADE

EFFECTIVE DEPTH AT _____ FT. BELOW ORIGINAL GRADE.

LOCATE DISPOSAL AREA 150 FT. FROM front LOT LINE AND 30' FT. FROM RIGHT LOT LINE AS SEEN WHEN FACING LOT FROM Old Columbia Rike.
312 OR LEFT

PLANS APPROVED BY Raymond Hodges DATE 12/19/78

COVER NO WORK UNTIL INSPECTED AND APPROVED.

NEITHER THE HOWARD COUNTY COUNCIL NOR THE HEALTH DEPARTMENT IS RESPONSIBLE FOR THE SUCCESSFUL OPERATION OF ANY SYSTEM.

NOTE: IF TRENCH IS USED CALL FOR INSPECTION BEFORE PLACING GRAVEL IN TRENCH.

NOTE: NO DRY WELL SHALL EXCEED 15 FOOT IN DIAMETER.

NOTE: ALL PIPE FROM HOUSE TO DISPOSAL AREA MUST BE CAST IRON.

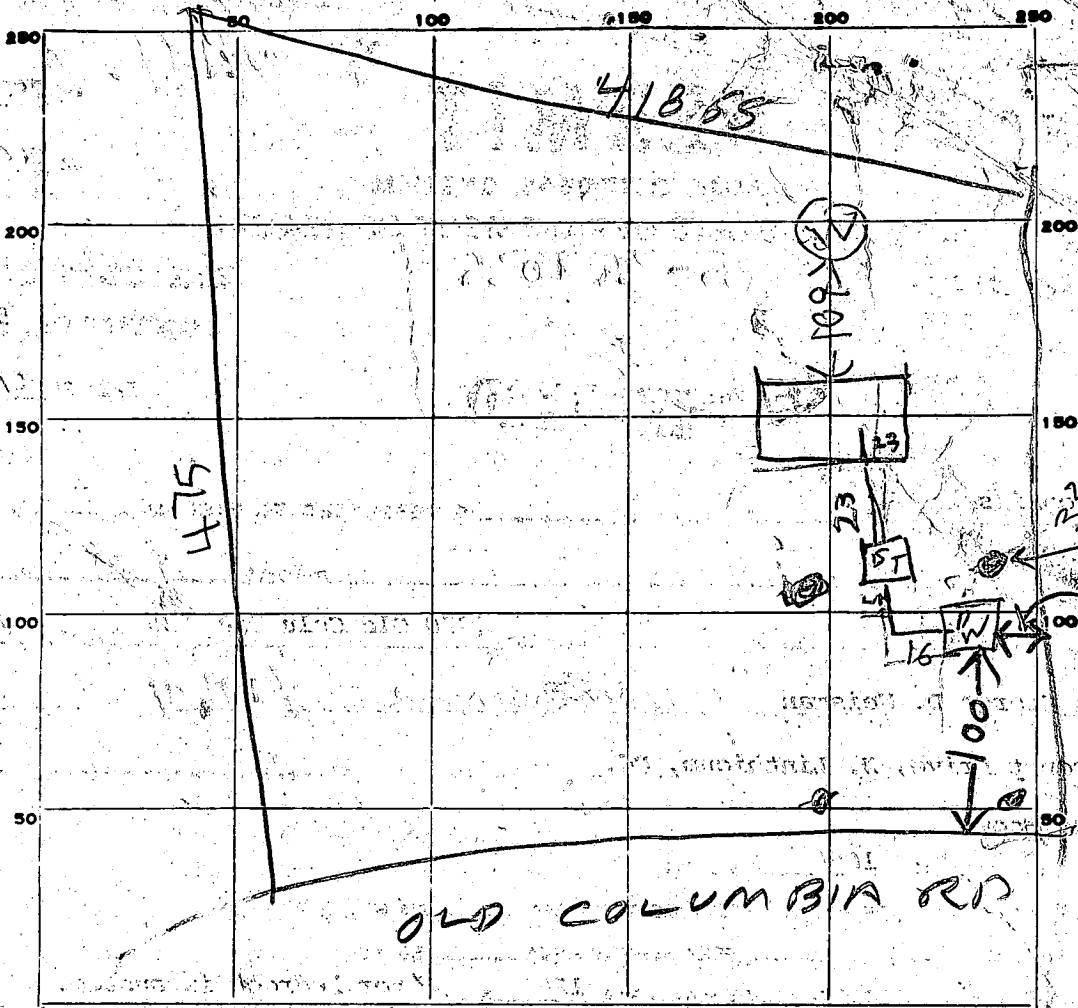
PERMIT VOID AFTER THREE YEARS.

NOTE: INSTALL STAND PIPE ON SEPTIC TANK AND DRY WELL. STAND PIPES MUST BE 8 INCHES IN DIAMETER. CAST IRON, CONCRETE OR TERRA COTTA ACCEPTED.

***INSTALLER IS RESPONSIBLE FOR OBTAINING FINAL APPROVAL ON THIS PERMIT.**

A 20475

NEW #6



INDICATE NORTH. - NAME ADJOINING ROADWAY AS BASE LINE.

PERMIT CARD _____

SEPTIC TANK, LEVEL 1000 CLEANOUTS ST / DW
TOP 2 1/2 FT below grade OK / OK

DISTRIBUTION BOX, LEVEL _____

TILE FIELD, DEPTH _____ FT. TRENCH WIDTH _____ FT.

GRAVEL DEPTH _____ IN. TOTAL LENGTH _____ FT.

NUMBER OF TRENCHES _____ TOTAL BOTTOM AREA _____

SEEPAGE PITS, INSIDE DIAMETER PERIMETER 6 0 FT. DEPTH BELOW INLET 8 FT.

ABSORBENT AREA 480 SQ. FT.

REMARKS 7/17/79 DW INLET 4 FT BELOW GRADE

7/17/79 - ADD STONE TO DW & CALL FOR RECHECK

LOCATION IS CLOSE ENOUGH ACCORDING TO PLAT 7 H SUPER

PROP 6/18/79 Lot 68 & Resubdivision of Lot 4 MRS SMOOTE CANNOT

FIND SEPTIC PLANS BUT THINKS THERE ARE PLANS UNDER DIFFERENT NAME

7/19/79 - STONE ADDED

DATE SYSTEM APPROVED 7/19/79 INSPECTOR Raymond Hodges

Pril.

APPLICATION

A 26475

8/11/77
9:30 A.M.

SEWAGE DISPOSAL TESTING

P _____

STATE OF MARYLAND - DEPARTMENT OF HEALTH AND MENTAL HYGIENE
HOWARD COUNTY HEALTH DEPARTMENT
ENVIRONMENTAL HEALTH SERVICES
P. O. BOX 476, ELLICOTT CITY, MARYLAND 21043
TELEPHONE: 465-5000, EXT. 356

DISTRICT 5th

DATE 7/21/77

residual, need test?

See attached sheet for Specs

TO: THE COUNTY HEALTH OFFICER
ELLICOTT CITY, MARYLAND

I, HEREBY, APPLY FOR THE NECESSARY TEST IN ORDER TO CONSTRUCT (OR RECONSTRUCT) A SEWAGE DISPOSAL SYSTEM.

PROPERTY OWNER CARALINE SOPER

ADDRESS 807 KAREN COURT APT 2T LAUREL, MD PHONE 725-0495

PROPERTY LOCATION: Lot 1 & Lot 2 & Extra Grounds
SUBDIVISION combined to make one by lot LOT NO. 24

ROAD AND DESCRIPTION Old Columbia Rd Howard County, MD 20810

SIZE OF LOT 7 ACRE 6 AC TYPE BLDG. 3 Bedroom Rancher
NUMBER OF BEDROOMS

IF NOT SINGLE RESIDENCE DESCRIBE SINGLE

THE SYSTEM INSTALLED UNDER THIS APPLICATION IS ACCEPTABLE ONLY UNTIL PUBLIC FACILITIES BECOME AVAILABLE.

SIGNATURE OF APPLICANT Mrs. Steven Lee Ferris

APPROVED BY Raymond Hodger FOR Bygwell DATE 12/19/78
(KIND OF SYSTEM)

REJECTED BY _____ FOR _____ DATE _____
(KIND OF SYSTEM)

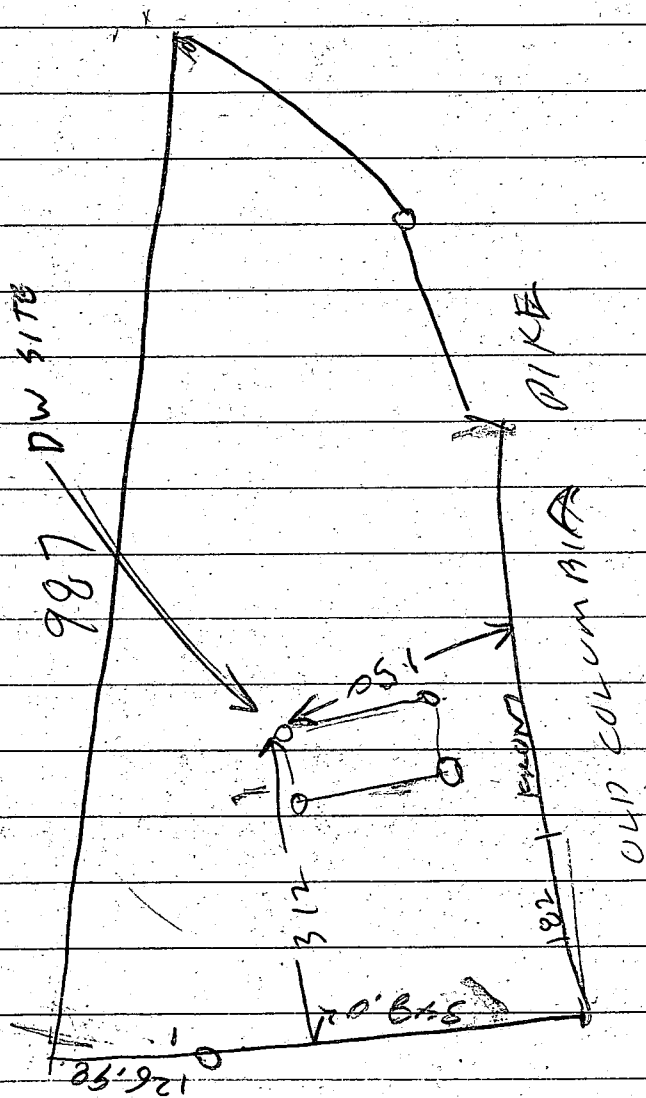
HOLD PENDING FURTHER TESTS _____ DATE _____

REASONS FOR REJECTION OR HOLDING 8/11/77 Per OK Hold for test

near farmhouse on large Residence (many acres) must be checked for overflowing sewage

THIS IS NOT A PERMIT

LOT NEW 4
SUPER PROP
Old Columbia Pike





APPLICATION

A 26476

P _____

SEWAGE DISPOSAL TESTING

STATE OF MARYLAND - DEPARTMENT OF HEALTH AND MENTAL HYGIENE

DISTRICT 5TH

DATE 12 July 77
21

HOWARD COUNTY HEALTH DEPARTMENT
ENVIRONMENTAL HEALTH SERVICES
P.O. BOX 476, ELLICOTT CITY, MARYLAND 21043
TELEPHONE: 465-5000, EXT. 356

8/14/77
9:30 A.M.
9/20/77
9:30 A.M.

TO: THE COUNTY HEALTH OFFICER
ELLICOTT CITY, MARYLAND

I, HEREBY, APPLY FOR THE NECESSARY TEST IN ORDER TO CONSTRUCT (OR RECONSTRUCT) A SEWAGE DISPOSAL SYSTEM.

PROPERTY OWNER CAROLINE C. SOPER

ADDRESS 807 KAREN CT. APT. 2 LAUREL MD. PHONE 725-0495

PROPERTY LOCATION 20310
Lot 1 & Lot 2 & Elyton
Ground Combined

SUBDIVISION _____ LOT NO. _____
RT to make one big Lot 6 ac in area

ROAD AND DESCRIPTION SOUTH OF 216 WEST OF RT. 29 ON

OLD COLUMBIA RD.

SIZE OF LOT 2 ACRES TYPE BLDG. SPLIT LEVEL 2 BR.
NUMBER OF BEDROOMS _____

IF NOT SINGLE RESIDENCE DESCRIBE SINGLE

THE SYSTEM INSTALLED UNDER THIS APPLICATION IS ACCEPTABLE ONLY UNTIL PUBLIC FACILITIES BECOME AVAILABLE.

SIGNATURE OF APPLICANT George D. Weissman

APPROVED BY _____ FOR _____ DATE _____
(KIND OF SYSTEM)

REJECTED BY RH FOR all DATE 8/10/77
(KIND OF SYSTEM)

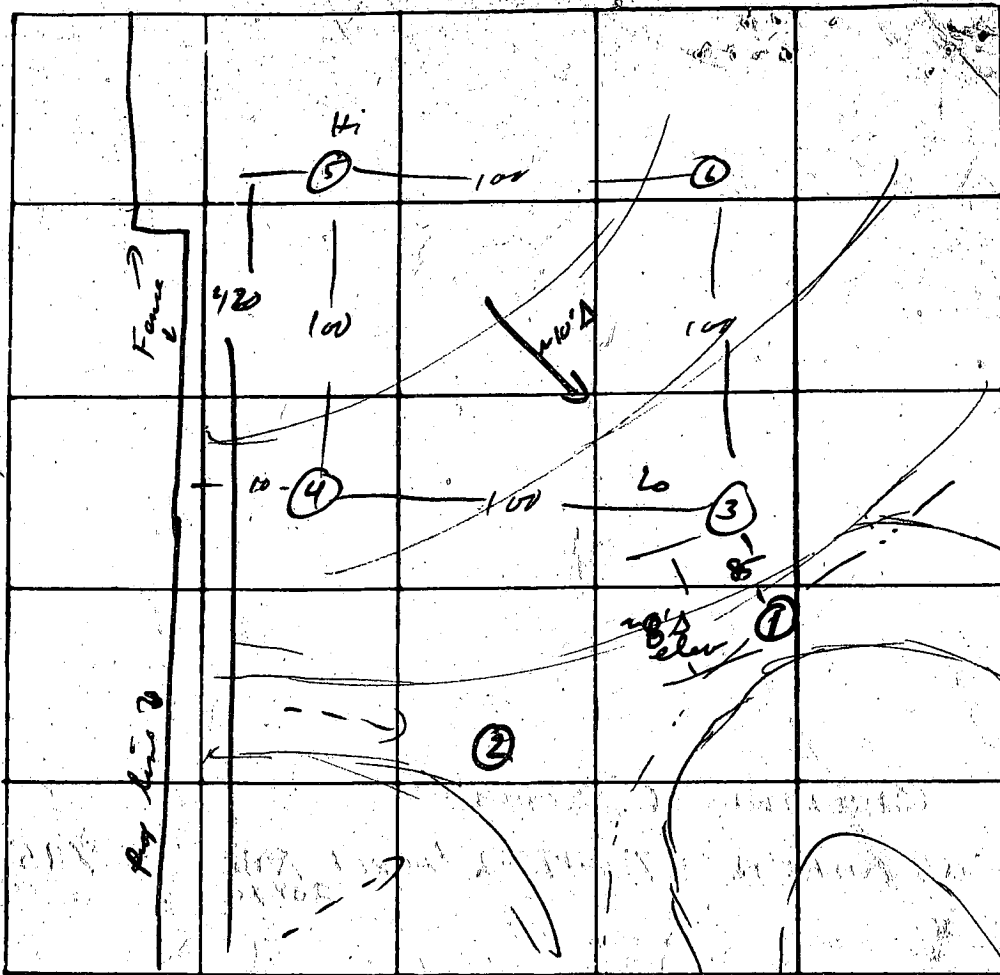
HOLD PENDING FURTHER TESTS _____ DATE _____

REASONS FOR REJECTION OR HOLDING 8/11/77 Underground Water RH

THIS IS NOT A PERMIT

See attached plat

③
sandy loam
1 1/2



INDICATE NORTH - NAME ADJOINING ROADWAY AS BASE LINE
Old Column DK

DATE	TEST NO.	DEPTH	PRE-WET		TEST 1" DROP		TIME
			START	STOP	START	STOP	
8/11/77	1V	9	TOP 4 FT	7 CLAY			
			WATER	BT 7	FROM	GRAD	
8/11/77	2V	10	TOP 3 FT	CLAY			
			WATER	BT 7	FROM	GRAD	
209477	3	3	1141	1143	1143	1149	6
		15 1/2	wet & muddy	mushy	-----	-----	---
		12 1/2	1142	1152	1152	→	25
					dist fell in hole ~ 120'		← Hard, Tight-packed
	4	12 1/2	clay				
	5	13	1150	1155	1155	1205	10
		3	1151	1152	1152	1153	4
	6	3	1150	1152	1152	1200	3
		13	1152	1159	1159	1214	5

REMARKS: Impossible to have 10000 sq ft porous soil on this lot

TESTED BY: R. Hodges

ALSO PRESENT: Ferris

gene ok R. own when new plat arrives

O. Underhill

B 1 **5632** SEQUENCE NO. (WRA USE ONLY)

STATE OF MARYLAND
WATER RESOURCES ADMINISTRATION
TAWES STATE OFFICE BLDG., ANNAPOLIS, MARYLAND 21401
APPLICATION FOR PERMIT TO DRILL WELL

WRA PERMIT NUMBER **HO-73-3078**
 FILL IN THIS FORM COMPLETELY

DATE RECEIVED (WRA USE ONLY) **12/18/78**
 9:30 A.M.

OWNER: **WELSMAN, EDGAR D**
 COL 15 LAST NAME COL 16 FIRST NAME COL 17 COL 18 COL 19 COL 20 COL 21 COL 22 COL 23 COL 24 COL 25 COL 26 COL 27 COL 28 COL 29 COL 30 COL 31 COL 32 COL 33 COL 34 COL 35 COL 36 COL 37 COL 38 COL 39 COL 40 COL 41 COL 42 COL 43 COL 44 COL 45 COL 46 COL 47 COL 48 COL 49 COL 50 COL 51 COL 52 COL 53 COL 54 COL 55 COL 56 COL 57 COL 58 COL 59 COL 60 COL 61 COL 62 COL 63 COL 64 COL 65 COL 66 COL 67 COL 68 COL 69 COL 70 COL 71 COL 72 COL 73 COL 74 COL 75 COL 76 COL 77 COL 78 COL 79 COL 80 COL 81 COL 82 COL 83 COL 84 COL 85 COL 86 COL 87 COL 88 COL 89 COL 90 COL 91 COL 92 COL 93 COL 94 COL 95 COL 96 COL 97 COL 98 COL 99 COL 100

STREET OR RFD: **1 CORNET DR.**
 COL 36 COL 37 COL 38 COL 39 COL 40 COL 41 COL 42 COL 43 COL 44 COL 45 COL 46 COL 47 COL 48 COL 49 COL 50 COL 51 COL 52 COL 53 COL 54 COL 55 COL 56 COL 57 COL 58 COL 59 COL 60 COL 61 COL 62 COL 63 COL 64 COL 65 COL 66 COL 67 COL 68 COL 69 COL 70 COL 71 COL 72 COL 73 COL 74 COL 75 COL 76 COL 77 COL 78 COL 79 COL 80 COL 81 COL 82 COL 83 COL 84 COL 85 COL 86 COL 87 COL 88 COL 89 COL 90 COL 91 COL 92 COL 93 COL 94 COL 95 COL 96 COL 97 COL 98 COL 99 COL 100

POST OFFICE: **N LANTHIER MD**
 COL 57 COL 58 COL 59 COL 60 COL 61 COL 62 COL 63 COL 64 COL 65 COL 66 COL 67 COL 68 COL 69 COL 70 COL 71 COL 72 COL 73 COL 74 COL 75 COL 76 COL 77 COL 78 COL 79 COL 80 COL 81 COL 82 COL 83 COL 84 COL 85 COL 86 COL 87 COL 88 COL 89 COL 90 COL 91 COL 92 COL 93 COL 94 COL 95 COL 96 COL 97 COL 98 COL 99 COL 100

B 1 CONTINUED **DRILLER INFORMATION**

DATE: **16 1978** LICENSE NUMBER: **273**
 COL 1 COL 2 COL 3 COL 4 COL 5 COL 6 COL 7 COL 8 COL 9 COL 10 COL 11 COL 12 COL 13 COL 14 COL 15 COL 16 COL 17 COL 18 COL 19 COL 20 COL 21 COL 22 COL 23 COL 24 COL 25 COL 26 COL 27 COL 28 COL 29 COL 30 COL 31 COL 32 COL 33 COL 34 COL 35 COL 36 COL 37 COL 38 COL 39 COL 40 COL 41 COL 42 COL 43 COL 44 COL 45 COL 46 COL 47 COL 48 COL 49 COL 50 COL 51 COL 52 COL 53 COL 54 COL 55 COL 56 COL 57 COL 58 COL 59 COL 60 COL 61 COL 62 COL 63 COL 64 COL 65 COL 66 COL 67 COL 68 COL 69 COL 70 COL 71 COL 72 COL 73 COL 74 COL 75 COL 76 COL 77 COL 78 COL 79 COL 80 COL 81 COL 82 COL 83 COL 84 COL 85 COL 86 COL 87 COL 88 COL 89 COL 90 COL 91 COL 92 COL 93 COL 94 COL 95 COL 96 COL 97 COL 98 COL 99 COL 100

FIRST NAME: **MAINE** DRILLER LAST NAME: **MAINE**
 COL 1 COL 2 COL 3 COL 4 COL 5 COL 6 COL 7 COL 8 COL 9 COL 10 COL 11 COL 12 COL 13 COL 14 COL 15 COL 16 COL 17 COL 18 COL 19 COL 20 COL 21 COL 22 COL 23 COL 24 COL 25 COL 26 COL 27 COL 28 COL 29 COL 30 COL 31 COL 32 COL 33 COL 34 COL 35 COL 36 COL 37 COL 38 COL 39 COL 40 COL 41 COL 42 COL 43 COL 44 COL 45 COL 46 COL 47 COL 48 COL 49 COL 50 COL 51 COL 52 COL 53 COL 54 COL 55 COL 56 COL 57 COL 58 COL 59 COL 60 COL 61 COL 62 COL 63 COL 64 COL 65 COL 66 COL 67 COL 68 COL 69 COL 70 COL 71 COL 72 COL 73 COL 74 COL 75 COL 76 COL 77 COL 78 COL 79 COL 80 COL 81 COL 82 COL 83 COL 84 COL 85 COL 86 COL 87 COL 88 COL 89 COL 90 COL 91 COL 92 COL 93 COL 94 COL 95 COL 96 COL 97 COL 98 COL 99 COL 100

SIGNATURE: *[Signature]*
 COL 1 COL 2 COL 3 COL 4 COL 5 COL 6 COL 7 COL 8 COL 9 COL 10 COL 11 COL 12 COL 13 COL 14 COL 15 COL 16 COL 17 COL 18 COL 19 COL 20 COL 21 COL 22 COL 23 COL 24 COL 25 COL 26 COL 27 COL 28 COL 29 COL 30 COL 31 COL 32 COL 33 COL 34 COL 35 COL 36 COL 37 COL 38 COL 39 COL 40 COL 41 COL 42 COL 43 COL 44 COL 45 COL 46 COL 47 COL 48 COL 49 COL 50 COL 51 COL 52 COL 53 COL 54 COL 55 COL 56 COL 57 COL 58 COL 59 COL 60 COL 61 COL 62 COL 63 COL 64 COL 65 COL 66 COL 67 COL 68 COL 69 COL 70 COL 71 COL 72 COL 73 COL 74 COL 75 COL 76 COL 77 COL 78 COL 79 COL 80 COL 81 COL 82 COL 83 COL 84 COL 85 COL 86 COL 87 COL 88 COL 89 COL 90 COL 91 COL 92 COL 93 COL 94 COL 95 COL 96 COL 97 COL 98 COL 99 COL 100

B 3 LOCATION OF WELL

COUNTY: **HOWARD**
 COL 1 COL 2 COL 3 COL 4 COL 5 COL 6 COL 7 COL 8 COL 9 COL 10 COL 11 COL 12 COL 13 COL 14 COL 15 COL 16 COL 17 COL 18 COL 19 COL 20 COL 21 COL 22 COL 23 COL 24 COL 25 COL 26 COL 27 COL 28 COL 29 COL 30 COL 31 COL 32 COL 33 COL 34 COL 35 COL 36 COL 37 COL 38 COL 39 COL 40 COL 41 COL 42 COL 43 COL 44 COL 45 COL 46 COL 47 COL 48 COL 49 COL 50 COL 51 COL 52 COL 53 COL 54 COL 55 COL 56 COL 57 COL 58 COL 59 COL 60 COL 61 COL 62 COL 63 COL 64 COL 65 COL 66 COL 67 COL 68 COL 69 COL 70 COL 71 COL 72 COL 73 COL 74 COL 75 COL 76 COL 77 COL 78 COL 79 COL 80 COL 81 COL 82 COL 83 COL 84 COL 85 COL 86 COL 87 COL 88 COL 89 COL 90 COL 91 COL 92 COL 93 COL 94 COL 95 COL 96 COL 97 COL 98 COL 99 COL 100

SUBDIVISION: **NONE**
 COL 1 COL 2 COL 3 COL 4 COL 5 COL 6 COL 7 COL 8 COL 9 COL 10 COL 11 COL 12 COL 13 COL 14 COL 15 COL 16 COL 17 COL 18 COL 19 COL 20 COL 21 COL 22 COL 23 COL 24 COL 25 COL 26 COL 27 COL 28 COL 29 COL 30 COL 31 COL 32 COL 33 COL 34 COL 35 COL 36 COL 37 COL 38 COL 39 COL 40 COL 41 COL 42 COL 43 COL 44 COL 45 COL 46 COL 47 COL 48 COL 49 COL 50 COL 51 COL 52 COL 53 COL 54 COL 55 COL 56 COL 57 COL 58 COL 59 COL 60 COL 61 COL 62 COL 63 COL 64 COL 65 COL 66 COL 67 COL 68 COL 69 COL 70 COL 71 COL 72 COL 73 COL 74 COL 75 COL 76 COL 77 COL 78 COL 79 COL 80 COL 81 COL 82 COL 83 COL 84 COL 85 COL 86 COL 87 COL 88 COL 89 COL 90 COL 91 COL 92 COL 93 COL 94 COL 95 COL 96 COL 97 COL 98 COL 99 COL 100

SECTION: **NONE** LOT: **4**
 COL 1 COL 2 COL 3 COL 4 COL 5 COL 6 COL 7 COL 8 COL 9 COL 10 COL 11 COL 12 COL 13 COL 14 COL 15 COL 16 COL 17 COL 18 COL 19 COL 20 COL 21 COL 22 COL 23 COL 24 COL 25 COL 26 COL 27 COL 28 COL 29 COL 30 COL 31 COL 32 COL 33 COL 34 COL 35 COL 36 COL 37 COL 38 COL 39 COL 40 COL 41 COL 42 COL 43 COL 44 COL 45 COL 46 COL 47 COL 48 COL 49 COL 50 COL 51 COL 52 COL 53 COL 54 COL 55 COL 56 COL 57 COL 58 COL 59 COL 60 COL 61 COL 62 COL 63 COL 64 COL 65 COL 66 COL 67 COL 68 COL 69 COL 70 COL 71 COL 72 COL 73 COL 74 COL 75 COL 76 COL 77 COL 78 COL 79 COL 80 COL 81 COL 82 COL 83 COL 84 COL 85 COL 86 COL 87 COL 88 COL 89 COL 90 COL 91 COL 92 COL 93 COL 94 COL 95 COL 96 COL 97 COL 98 COL 99 COL 100

NEAREST TOWN: **SCAGGSVILLE**
 COL 1 COL 2 COL 3 COL 4 COL 5 COL 6 COL 7 COL 8 COL 9 COL 10 COL 11 COL 12 COL 13 COL 14 COL 15 COL 16 COL 17 COL 18 COL 19 COL 20 COL 21 COL 22 COL 23 COL 24 COL 25 COL 26 COL 27 COL 28 COL 29 COL 30 COL 31 COL 32 COL 33 COL 34 COL 35 COL 36 COL 37 COL 38 COL 39 COL 40 COL 41 COL 42 COL 43 COL 44 COL 45 COL 46 COL 47 COL 48 COL 49 COL 50 COL 51 COL 52 COL 53 COL 54 COL 55 COL 56 COL 57 COL 58 COL 59 COL 60 COL 61 COL 62 COL 63 COL 64 COL 65 COL 66 COL 67 COL 68 COL 69 COL 70 COL 71 COL 72 COL 73 COL 74 COL 75 COL 76 COL 77 COL 78 COL 79 COL 80 COL 81 COL 82 COL 83 COL 84 COL 85 COL 86 COL 87 COL 88 COL 89 COL 90 COL 91 COL 92 COL 93 COL 94 COL 95 COL 96 COL 97 COL 98 COL 99 COL 100

MILES FROM TOWN (ENTER 0 IF IN TOWN): **1/4**
 COL 1 COL 2 COL 3 COL 4 COL 5 COL 6 COL 7 COL 8 COL 9 COL 10 COL 11 COL 12 COL 13 COL 14 COL 15 COL 16 COL 17 COL 18 COL 19 COL 20 COL 21 COL 22 COL 23 COL 24 COL 25 COL 26 COL 27 COL 28 COL 29 COL 30 COL 31 COL 32 COL 33 COL 34 COL 35 COL 36 COL 37 COL 38 COL 39 COL 40 COL 41 COL 42 COL 43 COL 44 COL 45 COL 46 COL 47 COL 48 COL 49 COL 50 COL 51 COL 52 COL 53 COL 54 COL 55 COL 56 COL 57 COL 58 COL 59 COL 60 COL 61 COL 62 COL 63 COL 64 COL 65 COL 66 COL 67 COL 68 COL 69 COL 70 COL 71 COL 72 COL 73 COL 74 COL 75 COL 76 COL 77 COL 78 COL 79 COL 80 COL 81 COL 82 COL 83 COL 84 COL 85 COL 86 COL 87 COL 88 COL 89 COL 90 COL 91 COL 92 COL 93 COL 94 COL 95 COL 96 COL 97 COL 98 COL 99 COL 100

B 2 WELL INFORMATION

MAXIMUM PUMPING RATE (GALLONS PER MINUTE): **5**
 COL 1 COL 2 COL 3 COL 4 COL 5 COL 6 COL 7 COL 8 COL 9 COL 10 COL 11 COL 12 COL 13 COL 14 COL 15 COL 16 COL 17 COL 18 COL 19 COL 20 COL 21 COL 22 COL 23 COL 24 COL 25 COL 26 COL 27 COL 28 COL 29 COL 30 COL 31 COL 32 COL 33 COL 34 COL 35 COL 36 COL 37 COL 38 COL 39 COL 40 COL 41 COL 42 COL 43 COL 44 COL 45 COL 46 COL 47 COL 48 COL 49 COL 50 COL 51 COL 52 COL 53 COL 54 COL 55 COL 56 COL 57 COL 58 COL 59 COL 60 COL 61 COL 62 COL 63 COL 64 COL 65 COL 66 COL 67 COL 68 COL 69 COL 70 COL 71 COL 72 COL 73 COL 74 COL 75 COL 76 COL 77 COL 78 COL 79 COL 80 COL 81 COL 82 COL 83 COL 84 COL 85 COL 86 COL 87 COL 88 COL 89 COL 90 COL 91 COL 92 COL 93 COL 94 COL 95 COL 96 COL 97 COL 98 COL 99 COL 100

AVERAGE DAILY QUANTITY NEEDED (GALLONS PER DAY): **500**
 COL 1 COL 2 COL 3 COL 4 COL 5 COL 6 COL 7 COL 8 COL 9 COL 10 COL 11 COL 12 COL 13 COL 14 COL 15 COL 16 COL 17 COL 18 COL 19 COL 20 COL 21 COL 22 COL 23 COL 24 COL 25 COL 26 COL 27 COL 28 COL 29 COL 30 COL 31 COL 32 COL 33 COL 34 COL 35 COL 36 COL 37 COL 38 COL 39 COL 40 COL 41 COL 42 COL 43 COL 44 COL 45 COL 46 COL 47 COL 48 COL 49 COL 50 COL 51 COL 52 COL 53 COL 54 COL 55 COL 56 COL 57 COL 58 COL 59 COL 60 COL 61 COL 62 COL 63 COL 64 COL 65 COL 66 COL 67 COL 68 COL 69 COL 70 COL 71 COL 72 COL 73 COL 74 COL 75 COL 76 COL 77 COL 78 COL 79 COL 80 COL 81 COL 82 COL 83 COL 84 COL 85 COL 86 COL 87 COL 88 COL 89 COL 90 COL 91 COL 92 COL 93 COL 94 COL 95 COL 96 COL 97 COL 98 COL 99 COL 100

USE FOR WATER (CIRCLE APPROPRIATE BOX)

HOME (SINGLE OR DOUBLE HOUSEHOLD UNIT ONLY)
 FARMING, AGRICULTURE, IRRIGATION
 INDUSTRIAL, COMMERCIAL, STATE AND FEDERAL GOVERNMENT.
 MUNICIPAL WATER SUPPLY
 PRIVATE WATER COMPANY } MUST HAVE STATE HEALTH DEPT. APPROVAL
 TEST

B 4 DIRECTION FROM TOWN (CIRCLE APPROPRIATE BOX)

NORTH EAST NORTHEAST SOUTHEAST
 SOUTH WEST NORTHWEST SOUTHWEST

NEAR WHAT ROAD: **Old Columbia Pike**
 COL 1 COL 2 COL 3 COL 4 COL 5 COL 6 COL 7 COL 8 COL 9 COL 10 COL 11 COL 12 COL 13 COL 14 COL 15 COL 16 COL 17 COL 18 COL 19 COL 20 COL 21 COL 22 COL 23 COL 24 COL 25 COL 26 COL 27 COL 28 COL 29 COL 30 COL 31 COL 32 COL 33 COL 34 COL 35 COL 36 COL 37 COL 38 COL 39 COL 40 COL 41 COL 42 COL 43 COL 44 COL 45 COL 46 COL 47 COL 48 COL 49 COL 50 COL 51 COL 52 COL 53 COL 54 COL 55 COL 56 COL 57 COL 58 COL 59 COL 60 COL 61 COL 62 COL 63 COL 64 COL 65 COL 66 COL 67 COL 68 COL 69 COL 70 COL 71 COL 72 COL 73 COL 74 COL 75 COL 76 COL 77 COL 78 COL 79 COL 80 COL 81 COL 82 COL 83 COL 84 COL 85 COL 86 COL 87 COL 88 COL 89 COL 90 COL 91 COL 92 COL 93 COL 94 COL 95 COL 96 COL 97 COL 98 COL 99 COL 100

ON WHICH SIDE OF ROAD (CIRCLE APPROPRIATE BOX): NORTH SOUTH EAST WEST

DISTANCE FROM ROAD (ENTER DISTANCE AND CIRCLE APPROPRIATE BOX): **140**
 COL 1 COL 2 COL 3 COL 4 COL 5 COL 6 COL 7 COL 8 COL 9 COL 10 COL 11 COL 12 COL 13 COL 14 COL 15 COL 16 COL 17 COL 18 COL 19 COL 20 COL 21 COL 22 COL 23 COL 24 COL 25 COL 26 COL 27 COL 28 COL 29 COL 30 COL 31 COL 32 COL 33 COL 34 COL 35 COL 36 COL 37 COL 38 COL 39 COL 40 COL 41 COL 42 COL 43 COL 44 COL 45 COL 46 COL 47 COL 48 COL 49 COL 50 COL 51 COL 52 COL 53 COL 54 COL 55 COL 56 COL 57 COL 58 COL 59 COL 60 COL 61 COL 62 COL 63 COL 64 COL 65 COL 66 COL 67 COL 68 COL 69 COL 70 COL 71 COL 72 COL 73 COL 74 COL 75 COL 76 COL 77 COL 78 COL 79 COL 80 COL 81 COL 82 COL 83 COL 84 COL 85 COL 86 COL 87 COL 88 COL 89 COL 90 COL 91 COL 92 COL 93 COL 94 COL 95 COL 96 COL 97 COL 98 COL 99 COL 100

APPROXIMATE DEPTH OF WELL: **150** FEET
 COL 1 COL 2 COL 3 COL 4 COL 5 COL 6 COL 7 COL 8 COL 9 COL 10 COL 11 COL 12 COL 13 COL 14 COL 15 COL 16 COL 17 COL 18 COL 19 COL 20 COL 21 COL 22 COL 23 COL 24 COL 25 COL 26 COL 27 COL 28 COL 29 COL 30 COL 31 COL 32 COL 33 COL 34 COL 35 COL 36 COL 37 COL 38 COL 39 COL 40 COL 41 COL 42 COL 43 COL 44 COL 45 COL 46 COL 47 COL 48 COL 49 COL 50 COL 51 COL 52 COL 53 COL 54 COL 55 COL 56 COL 57 COL 58 COL 59 COL 60 COL 61 COL 62 COL 63 COL 64 COL 65 COL 66 COL 67 COL 68 COL 69 COL 70 COL 71 COL 72 COL 73 COL 74 COL 75 COL 76 COL 77 COL 78 COL 79 COL 80 COL 81 COL 82 COL 83 COL 84 COL 85 COL 86 COL 87 COL 88 COL 89 COL 90 COL 91 COL 92 COL 93 COL 94 COL 95 COL 96 COL 97 COL 98 COL 99 COL 100

APPROXIMATE DIAMETER OF WELL: **6** (NEAREST INCH)
 COL 1 COL 2 COL 3 COL 4 COL 5 COL 6 COL 7 COL 8 COL 9 COL 10 COL 11 COL 12 COL 13 COL 14 COL 15 COL 16 COL 17 COL 18 COL 19 COL 20 COL 21 COL 22 COL 23 COL 24 COL 25 COL 26 COL 27 COL 28 COL 29 COL 30 COL 31 COL 32 COL 33 COL 34 COL 35 COL 36 COL 37 COL 38 COL 39 COL 40 COL 41 COL 42 COL 43 COL 44 COL 45 COL 46 COL 47 COL 48 COL 49 COL 50 COL 51 COL 52 COL 53 COL 54 COL 55 COL 56 COL 57 COL 58 COL 59 COL 60 COL 61 COL 62 COL 63 COL 64 COL 65 COL 66 COL 67 COL 68 COL 69 COL 70 COL 71 COL 72 COL 73 COL 74 COL 75 COL 76 COL 77 COL 78 COL 79 COL 80 COL 81 COL 82 COL 83 COL 84 COL 85 COL 86 COL 87 COL 88 COL 89 COL 90 COL 91 COL 92 COL 93 COL 94 COL 95 COL 96 COL 97 COL 98 COL 99 COL 100

METHOD OF DRILLING USED (CIRCLE APPROPRIATE METHOD)

BORED (ON AUGERED) JETTED DRIVEN
 AIR-ROTARY AIR-PERCUSSION ROTARY (HYDRAULIC ROTARY)
 CABLE REVERSE-ROTARY DRIVE-POINT

OTHER (DESCRIBE):

REPLACEMENT OR DEEPEMED WELLS (CIRCLE APPROPRIATE BOX)

THIS WELL WILL NOT REPLACE AN EXISTING WELL
 THIS WELL WILL REPLACE A WELL THAT WILL BE ABANDONED AND SEALED
 THIS WELL WILL REPLACE A WELL THAT WILL BE USED AS A STANDBY
 THIS WELL WILL DEEPEM AN EXISTING WELL PERMIT NUMBER OF WELL TO BE REPLACED OR DEEPEMED (IF AVAILABLE)

DRAW A SKETCH BELOW SHOWING LOCATION OF WELL IN RELATION TO NEARBY TOWN, ROADS AND STREAMS WITH NORTH IN THE DIRECTION OF THE ARROW, AND GIVE DISTANCE FROM WELL TO NEAREST ROAD JUNCTION OR STREAM CROSSING SHOWN ON SKETCH. ALSO SHOW, BY MEANS OF AN "X", THE WELL LOCATION IN THE BOX BELOW AND THE BOX NUMBER FROM THE WELL LOCATION MAP.

md 216 2' casing out of ground
 42' Well Casing P.W.D.
 Well about 35' from
 12/1/78 Bags of cement P.W.D.
 old Columbia Pike
 (Well approx. 10' or so from old well hole)
 No house plans
 No house 12/18/78
 No septic
 C.B.S.

NOT TO BE FILLED IN BY DRILLER (WRA USE ONLY)

APPROPRIATION PERMIT NUMBER: **54** ENGINEER REVIEW DISTRICT NO.: **63**
 COL 1 COL 2 COL 3 COL 4 COL 5 COL 6 COL 7 COL 8 COL 9 COL 10 COL 11 COL 12 COL 13 COL 14 COL 15 COL 16 COL 17 COL 18 COL 19 COL 20 COL 21 COL 22 COL 23 COL 24 COL 25 COL 26 COL 27 COL 28 COL 29 COL 30 COL 31 COL 32 COL 33 COL 34 COL 35 COL 36 COL 37 COL 38 COL 39 COL 40 COL 41 COL 42 COL 43 COL 44 COL 45 COL 46 COL 47 COL 48 COL 49 COL 50 COL 51 COL 52 COL 53 COL 54 COL 55 COL 56 COL 57 COL 58 COL 59 COL 60 COL 61 COL 62 COL 63 COL 64 COL 65 COL 66 COL 67 COL 68 COL 69 COL 70 COL 71 COL 72 COL 73 COL 74 COL 75 COL 76 COL 77 COL 78 COL 79 COL 80 COL 81 COL 82 COL 83 COL 84 COL 85 COL 86 COL 87 COL 88 COL 89 COL 90 COL 91 COL 92 COL 93 COL 94 COL 95 COL 96 COL 97 COL 98 COL 99 COL 100

FORCE: WRITE INITIALS IN BOX CONDITIONS: **70 71 72 73 74 75 76 77 78 79**

BOX NUMBER: **820**
450

NORTH COORDINATE: **475000**
 COL 1 COL 2 COL 3 COL 4 COL 5 COL 6 COL 7 COL 8 COL 9 COL 10 COL 11 COL 12 COL 13 COL 14 COL 15 COL 16 COL 17 COL 18 COL 19 COL 20 COL 21 COL 22 COL 23 COL 24 COL 25 COL 26 COL 27 COL 28 COL 29 COL 30 COL 31 COL 32 COL 33 COL 34 COL 35 COL 36 COL 37 COL 38 COL 39 COL 40 COL 41 COL 42 COL 43 COL 44 COL 45 COL 46 COL 47 COL 48 COL 49 COL 50 COL 51 COL 52 COL 53 COL 54 COL 55 COL 56 COL 57 COL 58 COL 59 COL 60 COL 61 COL 62 COL 63 COL 64 COL 65 COL 66 COL 67 COL 68 COL 69 COL 70 COL 71 COL 72 COL 73 COL 74 COL 75 COL 76 COL 77 COL 78 COL 79 COL 80 COL 81 COL 82 COL 83 COL 84 COL 85 COL 86 COL 87 COL 88 COL 89 COL 90 COL 91 COL 92 COL 93 COL 94 COL 95 COL 96 COL 97 COL 98 COL 99 COL 100

EAST COORDINATE: **0885000**
 COL 1 COL 2 COL 3 COL 4 COL 5 COL 6 COL 7 COL 8 COL 9 COL 10 COL 11 COL 12 COL 13 COL 14 COL 15 COL 16 COL 17 COL 18 COL 19 COL 20 COL 21 COL 22 COL 23 COL 24 COL 25 COL 26 COL 27 COL 28 COL 29 COL 30 COL 31 COL 32 COL 33 COL 34 COL 35 COL 36 COL 37 COL 38 COL 39 COL 40 COL 41 COL 42 COL 43 COL 44 COL 45 COL 46 COL 47 COL 48 COL 49 COL 50 COL 51 COL 52 COL 53 COL 54 COL 55 COL 56 COL 57 COL 58 COL 59 COL 60 COL 61 COL 62 COL 63 COL 64 COL 65 COL 66 COL 67 COL 68 COL 69 COL 70 COL 71 COL 72 COL 73 COL 74 COL 75 COL 76 COL 77 COL 78 COL 79 COL 80 COL 81 COL 82 COL 83 COL 84 COL 85 COL 86 COL 87 COL 88 COL 89 COL 90 COL 91 COL 92 COL 93 COL 94 COL 95 COL 96 COL 97 COL 98 COL 99 COL 100

ELEVATION AT WELL HEAD (FEET): **0/0**
 COL 1 COL 2 COL 3 COL 4 COL 5 COL 6 COL 7 COL 8 COL 9 COL 10 COL 11 COL 12 COL 13 COL 14 COL 15 COL 16 COL 17 COL 18 COL 19 COL 20 COL 21 COL 22 COL 23 COL 24 COL 25 COL 26 COL 27 COL 28 COL 29 COL 30 COL 31 COL 32 COL 33 COL 34 COL 35 COL 36 COL 37 COL 38 COL 39 COL 40 COL 41 COL 42 COL 43 COL 44 COL 45 COL 46 COL 47 COL 48 COL 49 COL 50 COL 51 COL 52 COL 53 COL 54 COL 55 COL 56 COL 57 COL 58 COL 59 COL 60 COL 61 COL 62 COL 63 COL 64 COL 65 COL 66 COL 67 COL 68 COL 69 COL 70 COL 71 COL 72 COL 73 COL 74 COL 75 COL 76 COL 77 COL 78 COL 79 COL 80 COL 81 COL 82 COL 83 COL 84 COL 85 COL 86 COL 87 COL 88 COL 89 COL 90 COL 91 COL 92 COL 93 COL 94 COL 95 COL 96 COL 97 COL 98 COL 99 COL 100

B 4 CONTINUED **HEALTH DEPARTMENT APPROVAL**

STATE HEALTH (CIRCLE BOX) **5** COUNTY NAME: **Howard** COUNTY NO.: **W0924A**
 COL 1 COL 2 COL 3 COL 4 COL 5 COL 6 COL 7 COL 8 COL 9 COL 10 COL 11 COL 12 COL 13 COL 14 COL 15 COL 16 COL 17 COL 18 COL 19 COL 20 COL 21 COL 22 COL 23 COL 24 COL 25 COL 26 COL 27 COL 28 COL 29 COL 30 COL 31 COL 32 COL 33 COL 34 COL 35 COL 36 COL 37 COL 38 COL 39 COL 40 COL 41 COL 42 COL 43 COL 44 COL 45 COL 46 COL 47 COL 48 COL 49 COL 50 COL 51 COL 52 COL 53 COL 54 COL 55 COL 56 COL 57 COL 58 COL 59 COL 60 COL 61 COL 62 COL 63 COL 64 COL 65 COL 66 COL 67 COL 68 COL 69 COL 70 COL 71 COL 72 COL 73 COL 74 COL 75 COL 76 COL 77 COL 78 COL 79 COL 80 COL 81 COL 82 COL 83 COL 84 COL 85 COL 86 COL 87 COL 88 COL 89 COL 90 COL 91 COL 92 COL 93 COL 94 COL 95 COL 96 COL 97 COL 98 COL 99 COL 100

DATE: **1 1 7 7 8** APPROVED BY: *[Signature]*
 COL 1 COL 2 COL 3 COL 4 COL 5 COL 6 COL 7 COL 8 COL 9 COL 10 COL 11 COL 12 COL 13 COL 14 COL 15 COL 16 COL 17 COL 18 COL 19 COL 20 COL 21 COL 22 COL 23 COL 24 COL 25 COL 26 COL 27 COL 28 COL 29 COL 30 COL 31 COL 32 COL 33 COL 34 COL 35 COL 36 COL 37 COL 38 COL 39 COL 40 COL 41 COL 42 COL 43 COL 44 COL 45 COL 46 COL 47 COL 48 COL 49 COL 50 COL 51 COL 52 COL 53 COL 54 COL 55 COL 56 COL 57 COL 58 COL 59 COL 60 COL 61 COL 62 COL 63 COL 64 COL 65 COL 66 COL 67 COL 68 COL 69 COL 70 COL 71 COL 72 COL 73 COL 74 COL 75 COL 76 COL 77 COL 78 COL 79 COL 80 COL 81 COL 82 COL 83 COL 84 COL 85 COL 86 COL 87 COL 88 COL 89 COL 90 COL 91 COL 92 COL 93 COL 94 COL 95 COL 96 COL 97 COL 98 COL 99 COL 100

43 **Donald W. Monahan, Sanitarian**

B 5 SPECIAL CONDITIONS 8-63 (WRA USE ONLY)

1 2 3 (SEQ. NO.) 6

A 26475 HEALTH

C 1 **0722** SEQUENCE NO. (WRA USE ONLY)
 1 2 3 (SEQ. NO.) 6
 (THIS NUMBER IS TO BE PUNCHED IN COLS. 3-6 ON ALL CARDS)

STATE OF MARYLAND
WATER RESOURCES ADMINISTRATION
 TAWES STATE OFFICE-BLDG., ANNAPOLIS, MD. 21401
WELL COMPLETION REPORT

THIS REPORT MUST BE SUBMITTED WI
 IN 30 DAYS AFTER WELL COMPLET
FILL IN THIS FORM COMPLETELY
 COUNTY NUMBER **W-29244**

DATE RECEIVED (WRA USE ONLY) **Dec 18 1978** DEPTH OF WELL **165** PERMIT NO. FROM "PERMIT TO DRILL WELL"
 DATE WELL COMPLETED **110-79-3078**
 22 (TO NEAREST FOOT) 26
 28 29 30 31 32 33 34 35 36 37
 DRILLERS IDENTIFICATION NO. **273**

OWNER **WEISMAN** LAST NAME **GEORGE** FIRST NAME
 STREET OR RFD **T CORONET DR** POST OFFICE **N LINTHicum Md**

WELL LOG

STATE THE KIND OF FORMATIONS PENETRATED, THEIR COLOR, DEPTH, THICKNESS AND IF WATER BEARING

DESCRIPTION (USE ADDITIONAL SHEETS IF NECESSARY)	FEET		CHECK IF WATER BEARING
	FROM	TO	
T	1	2	
S	30	30	
SAND	45	45	✓
MICKA	45	65	
SANDSTONE	65	70	✓
MICKA	165	165	

GROUTING RECORD

WELL HAS BEEN GROUTED (CIRCLE APPROPRIATE BOX) YES NO
 TYPE OF GROUTING MATERIAL (CIRCLE BOX)
 CEMENT BENTONITE CLAY
 NO. OF BAGS **12** NO. OF POUNDS **1200**
 GALLONS OF WATER **72**
 DEPTH OF GROUT SEAL (TO NEAREST FOOT)
 FROM **0** FT. TO **35** MEASURED FT.
 (ENTER 0 IF FROM SURFACE)

CASING RECORD

INSERT APPROPRIATE CODE BELOW
 STEEL CONCRETE
 PLASTIC OTHER
 MAIN CASING TYPE S+ T
 NOMINAL DIAMETER TOP (MAIN) CASING (NEAREST INCH) **6**
 TOTAL DEPTH OF MAIN CASING (NEAREST FOOT) **42**

OTHER CASING (IF USED)

EACH CASING	DIAMETER (INCH)		DEPTH (FEET)	
	FROM	TO	FROM	TO

SCREEN RECORD

INSERT APPROPRIATE CODE BELOW
 STEEL BRASS OR BRONZE OPEN HOLE
 PLASTIC OTHER

SCREEN

EACH SCREEN	DEPTH (NEAREST WHOLE FOOT)	
	FROM	TO
1	40	165
2		
3		

SLOT SIZE 1. _____ 2. _____ 3. _____

DIAMETER OF SCREEN **56** (NEAREST INCH)
 FROM _____ TO _____
 GRAVEL PACK _____
 IF WELL DRILLED WAS A FLOWING WELL CIRCLE BOX **68** F

WRA USE ONLY (NOT TO BE FILLED IN BY DRILLER)
 T (E.R.O.S.) W Q
 70 72 74 75 76
 TELESCOPE LOG OTHER DATA
 CASING INDICATOR AVAILABLE

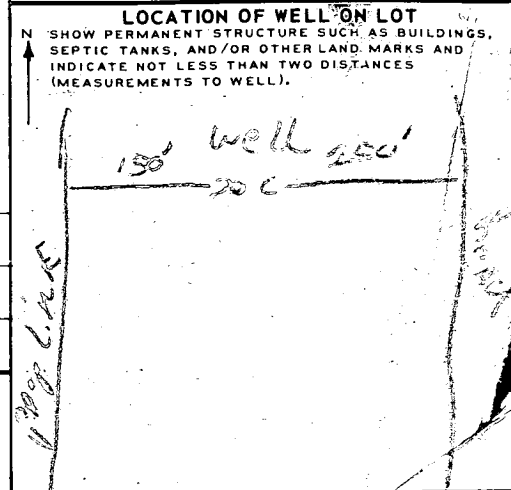
PUMPING TEST

HOURS PUMPED (TO NEAREST HOUR) **8**
 PUMPING RATE (GALLONS PER MINUTE TO NEAREST GALLON) **8**
 METHOD USED TO MEASURE PUMPING RATE **Bucket**
 WATER LEVEL: (DISTANCE FROM LAND SURFACE)
 BEFORE PUMPING **30** (NEAREST FOOT)
 WHEN PUMPING **165** (NEAREST FOOT)
 TYPE OF PUMP USED (CIRCLE APPROPRIATE BOX) (FOR PUMPING TEST)
 AIR PISTON TURBINE
 CENTRIFUGAL ROTARY OTHER (DESCRIBE BELOW)
 JET SUBMERSIBLE

PUMP INSTALLED

TYPE OF PUMP (WRITE APPROPRIATE LETTER IN BOX - SEE ABOVE: A, C, J, P, R, S, T, O)
 DRILLER WILL INSTALL PUMP (CIRCLE APPROPRIATE BOX) YES NO
 CAPACITY:
 GALLONS PER MINUTE (TO NEAREST GALLON) _____
 PUMP HORSE POWER _____
 PUMP COLUMN LENGTH (NEAREST FOOT) **43** 47

CASING HEIGHT (CIRCLE APPROPRIATE BOX AND ENTER CASING HEIGHT)
 ABOVE } LAND SURFACE (NEAREST FOOT)
 BELOW } **2**



CIRCLE APPROPRIATE BOXES

A WELL WAS ABANDONED AND SEALED WHEN THIS WELL WAS COMPLETED
 E ELECTRIC LOG OBTAINED
 P TEST WELL CONVERTED TO PRODUCTION WELL

I HEREBY CERTIFY THAT I HAVE COMPLIED WITH ALL CONDITIONS STATED ON THE ABOVE-CAPTIONED "PERMIT TO DRILL WELL", AND THAT INFORMATION CONTAINED IN THIS REPORT IS TRUE, ACCURATE, AND COMPLETE TO THE BEST OF MY KNOWLEDGE, INFORMATION AND BELIEF.

DRILLERS NAME **Ralph Wayne**
 (PLEASE PRINT) **Ralph Wayne**
 SIGNATURE